



The Green  
Slingsby  
North Yorkshire  
YO62 4AA  
(01653) 628370

Head Teacher:  
Mrs Georgie Metcalfe  
BA HONS NPQH

## SLINGSBY C.P. SCHOOL NEWSLETTER

### Friday January 13<sup>th</sup>, 2017

#### Snow Days

In the event of heavy snowfall a decision to close school would be made. This decision rests on a number of factors.

- Forecast and personal safety of staff, parents and children
- Distances that staff have to travel to school
- Distances that parents have to travel to school
- Conversations between staff to compare notes about their own village environments.
- Staff conversations will take place from 7am onwards to gauge who can and can't get in

It is a very difficult decision to make and I have seen with other colleagues that they close a school to then find they could have stayed open and likewise that they stay open to realise that they should have closed! We have a number of families now who have to travel from Helmsley to Burythorpe and from Great Habton and Bulmer, so distances are much further than they used to be! We do not have the luxury of fabulous road systems either, and many are difficult to negotiate in poor weather.

We have members of staff who travel

- 1) 19 miles
- 2) 17 miles
- 3) 20 miles
- 4) 13 miles

All things will be taken into consideration before a decision is made and I do understand that a school closure causes many difficulties for some parents. I can assure you that this decision would never be taken lightly and in the nearly 5 years that I have been a head teacher, I have never made a decision to close a school due to snow. However, we have to weigh up staffing ratios and their ability to travel safely and the safety of our families too.

The decision to close would be made as quickly as possible and I will send a text out to all parents registered on the texting service. Mr Smith will update the website. I will also contact Radio York (if I can get through). Our advice is:

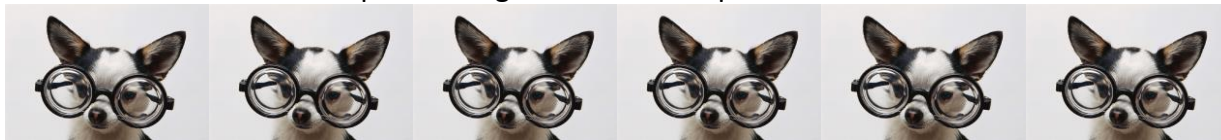
- If you haven't heard, then set off!
- If in doubt and you are worried, stay at home
- Keep an eye out for texts.
- If it is bad where you live and you haven't heard from us, or checked the website, either don't come in or set off a bit later

Please send the children to school well wrapped up and with a pair of named wellies (in a carrier bag) so if it is snowy we can get out and build igloos! The children will need dry shoes and potentially fresh socks and tights just in case. I do know the children are desperate for snow!



## Monday January 16<sup>th</sup>

The school nurses are in to perform sight tests on Reception children.



## FOSS

Tickets are available from the school office, as mentioned previously. This night is always a fun night with some really tasty curries to try!



## Celebrations

In a recent meeting with a NYCC adviser a number of positives in the subsequent report were identified.

- The Head teacher leads the school with clear passion and commitment
- Outstanding Teaching and Learning was observed in Mr Smith and Mrs Jordan's class (poor Mr Mortimer was absent that day!)
- Calm working environments
- High expectations in terms of conduct behaviour and learning behaviour
- Presentation was consistently outstanding
- Displays around the classes were highly engaging
- The data picture for KS2 indicated that the KS2 children in 2015 made outstanding progress
- The Head Teacher has an incredibly detailed knowledge of every child in school and the progress they are making in relation to prior attainment.

As is usual, we were also given advice on how we can keep moving forward. Many thanks to our amazing team of Slingsby School staff, governors and children and also to our families who support us in their child's learning. We are all equally important in this educational journey.

