

# All About Clarice Cliff



# Clarice Cliff



Clarice Cliff was an English ceramic artist.



Her love of pottery began while visiting an aunt, who hand-painted items at a local pottery company.



# Early Life

Clarice Cliff was born on 20<sup>th</sup> January 1899 in Stoke-on-Trent to her parents, Harry and Ann, in a terraced house.

Clarice had six siblings.

Clarice was sent to a different school from her siblings. At the age of 13, she left school and started working in the pottery industry.

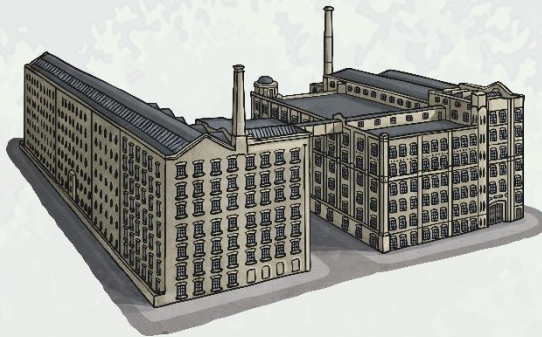


# Early Career

After his first job as a messenger in 1816, Clarice's next big opportunity was **enmelling**. This was a job that he brought in the job that he found at a factory. Along with this, he was able to get a job at the Royal College of Art, in Paris. With his support, he was able to study at the Royal College of Art, in Paris.

## Talk about It

Why do you think Clarice took the unusual risk of moving jobs?





# Bizarre

Clarice soon became recognised as a talented ceramic artist and in 1927, was given her own studio.

Clarice developed a new design for pottery called Bizarre. It was unlike anything that had been seen before. It was made up of bright colours and shapes, in particular, triangles.

## Interesting Fact

The 'Bizarre' pattern was born when Clarice began experimenting with her own freehand patterns of triangles to cover imperfections in the pottery.

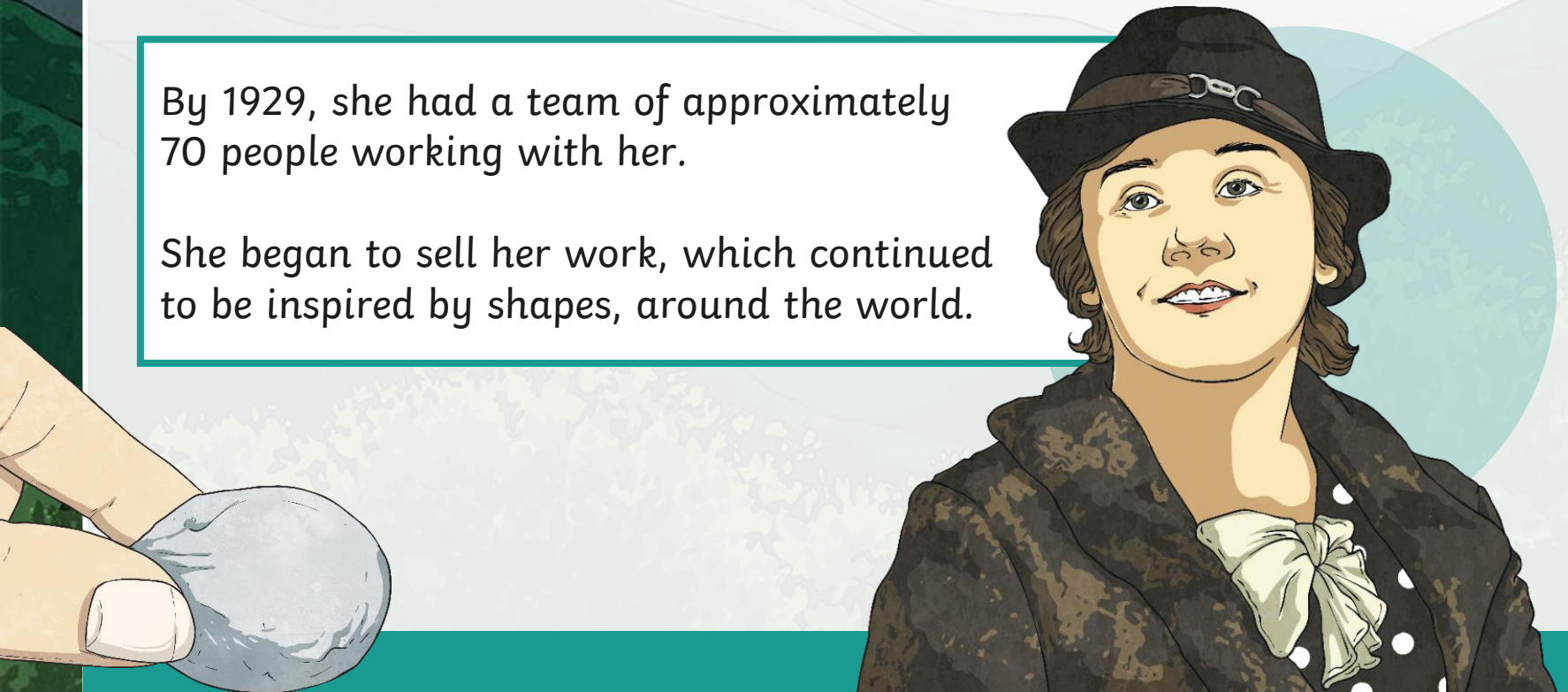


# Later Career

Clarice went on to study at the Royal College of Art in Kensington.

By 1929, she had a team of approximately 70 people working with her.

She began to sell her work, which continued to be inspired by shapes, around the world.





# Later Life

After the death of her father in 1972, Clarice continued to work at the factory until she had a stroke in 1981. She died on 10th October 1981, aged 82. Her family said she had a hard life.

## Think about It

Clarice was born on 20<sup>th</sup> January 1899. Can you work out how old she was when she died?

73

## Interesting Fact

During the Second World War, only plain white pottery was allowed to be made. Clarice was unable to continue with her design work.



# Remembering Clarice Cliff

Many original pieces of Clarice Cliff pottery have gone on to sell for thousands of pounds.

In 2004, a Clarice Cliff platter sold for £40,000! It was originally bought in 1933 for only 25 shillings. It is in the 'May Avenue' pattern, which was briefly produced in 1932 and 1933.

Clarice is considered to be an incredibly successful woman of her time.

## Talk about It

Why do you think this piece of pottery was so expensive?





# Some of Her Most Famous Work

## Crocus Pattern (1928)

A simple, hand-painted pattern of orange, blue and purple flowers. Each flower is painted with upward strokes.



## Bizarre (1927)

Bright and vibrant colours, using simple shapes, particularly triangles.

## Try It Yourself

Can you design your own pattern in the style of Clarice Cliff?

# Glossary

**backstamp** – A reference mark underneath a piece of pottery, which identifies who made it.

**ceramic artist** – A person who works with pottery to create different items.

**enamelling** – The process of applying a glaze to the pottery.

**gilder** – Someone who adds a thin layer of gold to solid surfaces.







twinkl