

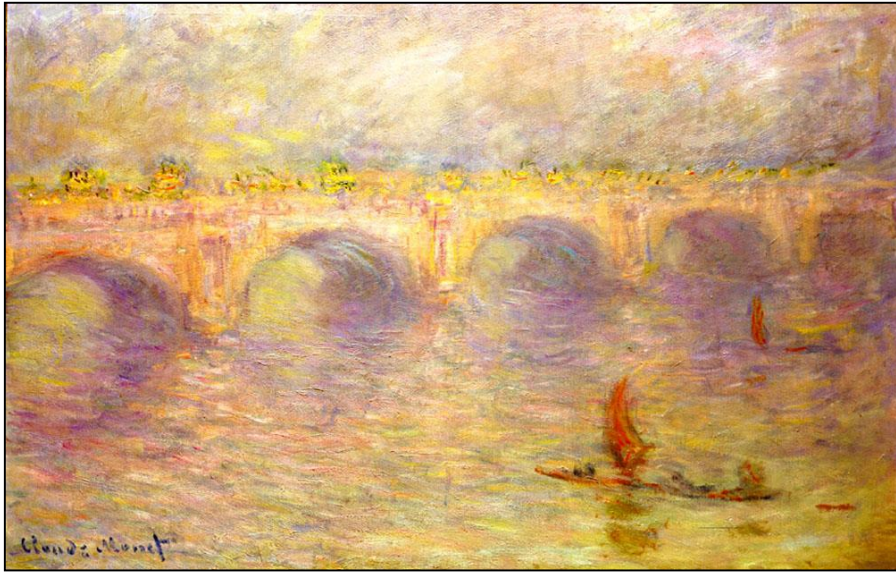
# Monet's River Thames Series



## Palace of Westminster

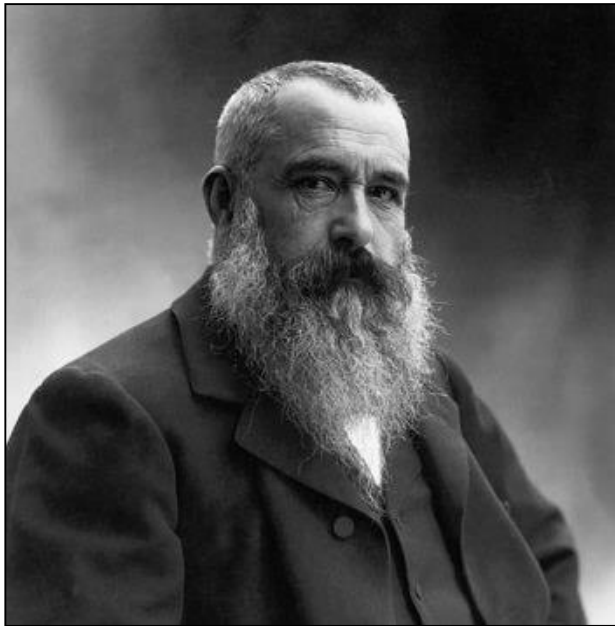






**Waterloo Bridge**





# Claude Monet

French Artist

Born in Paris in 1840

Died 1926

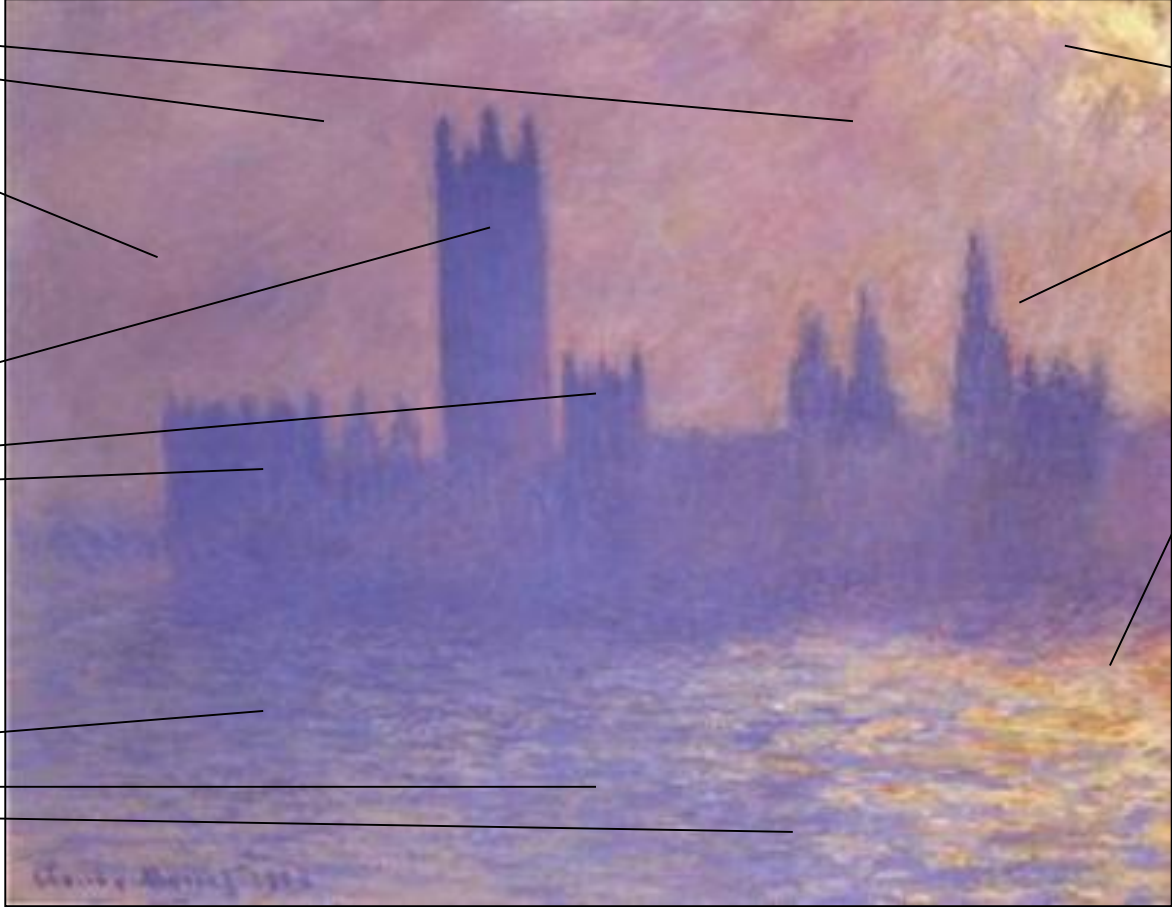
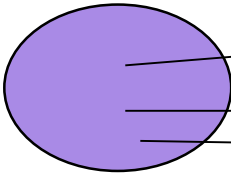
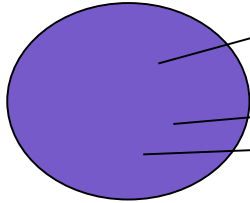
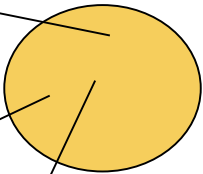
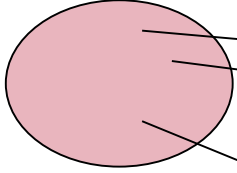
He loved to paint outdoors and particularly enjoyed using light and colour to create an “Impression.”

He is famous for starting a new style of art called “Impressionism.”

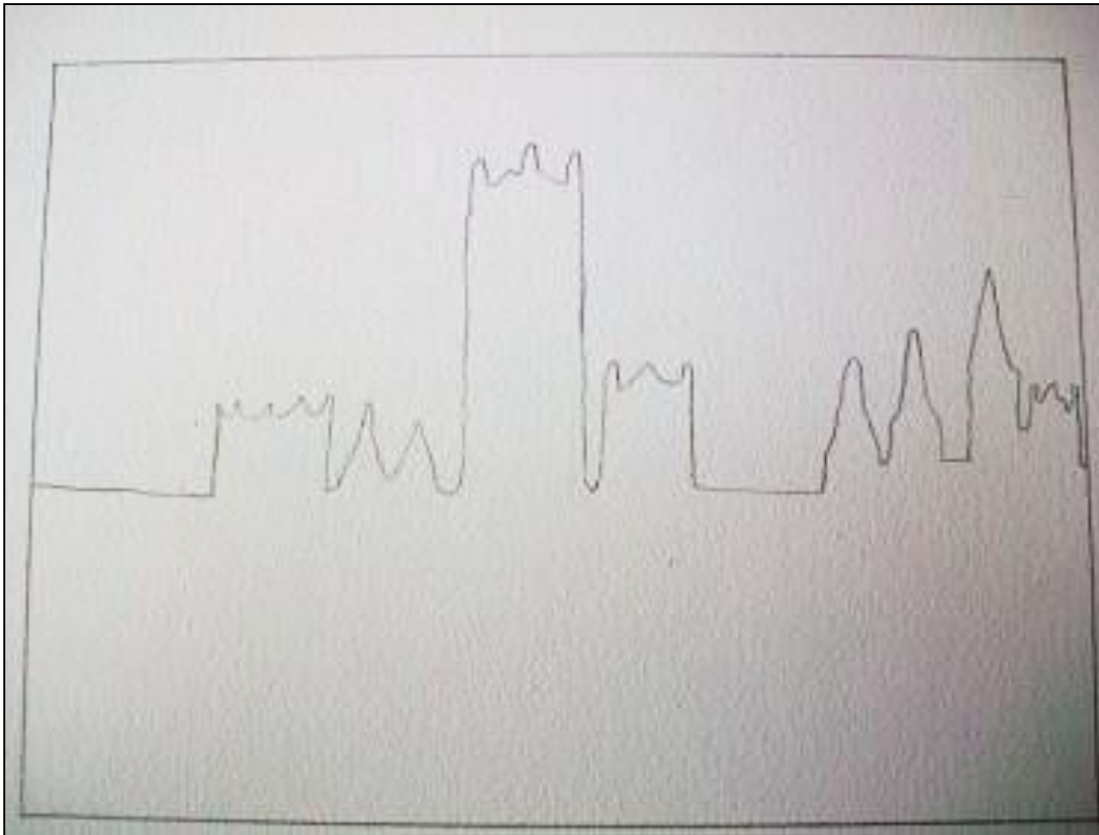








1. Draw a rectangle with a ruler that leaves a small border around the edge of your paper



2. Using your Monet painting as a guide, draw the outline of Westminster Palace and the rest of the horizon across the centre.

*Do not worry if it is not exact or you do not have the right number of towers and turrets. Remember you are just creating an impression.*



Now use your 4 colours to paint your own impression of the River Thames and Westminster Palace using the picture by Monet in your sketch book.

You may find that as you paint, you create some extra shades on your paper as your colours might blend together. Here you can see this has happened with the yellow and pink to make an orange. Do not worry if this happens, it will just add to the overall "Impression."